



# 2013 | Annual Review

A Better Future Together

# Vision

Thriving Devon communities challenging disadvantage and bringing about positive changes locally.

# Mission

Connecting the voluntary sector, donors and partners in a way that supports them to identify and tackle local issues together.

# Theory of Change

If we support the voluntary sector, donors and partners in Devon to identify and build upon their strengths to tackle issues together, then communities will be more resilient and inclusive with increased capacity to thrive.



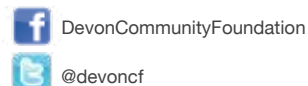
*Sirona Therapeutic  
Horsemanship CIC*

Devon Community Foundation, The Factory, Leat Street, Tiverton EX16 5LL

Call: 01884 235887 Visit: [www.devoncf.com](http://www.devoncf.com)

A company limited by guarantee, registered in England and Wales, Company No: 3236918

Charity no: 1057923



# Inside

- 1 Introduction
- 2 Highlights
- 3 A Better Future Together
- 4 Overview of Grant Making
- 5 Connection Grants
- 6 Action Grants
- 7 Evolution Grants
- 8 The Tip of the Iceberg
- 10 Our Thriving Community
- 11 Figures
- 12 Our Funds
- 14 Philanthropy
- 15 What we do for our donors
- 16 UK Community Foundations
- 17 Volunteer of the Year Awards



# Introduction

## Hello and welcome

The last year has continued to see Devon Community Foundation go from strength to strength and I am delighted with the progress made. This is not because of how great that is for us as Trustees, the office team and donors, but because of the incredible power of what local philanthropy can do and the benefits that their generosity can bring for many who need support in our communities.

There is a belief that the impact of austerity, and changes to public spending on local vulnerable people and places, is only just beginning to be seen. We could be forgiven for thinking the worst is over, but the voluntary sector is still under enormous pressure to support the most disadvantaged and vulnerable in our communities – in effect seeking to cushion some of the effects of reductions in services from the public sector. Funds are still short and more people than ever need the help they offer. The rapid increase in demand for Foodbanks from families trying to make ends meet is just one of many symptoms of this need, and the dire impact of this winter's flooding is another. Local groups continue to respond to their beneficiaries in a context where there is significantly less support for these individuals. Our communities and volunteers are really magnificent in the way they reach out to help, but they cannot do it all on their own. As a result we have seen an increased demand for funds and, of course, we want to do more.

In the 2012-13 financial year the Foundation received 324 requests for funding for a total of £1,149,547, over two and a half times what we had available to give. The majority of charities are very small, local volunteer-run organisations with an income of less than £10,000 a year and their survival is dependent on the generosity of individuals, but 85% of charitable donations in the UK go to the largest 5% of charities. So here at the Foundation we work with philanthropists who want to make a difference locally. Charity really does begin at home! We are committed to a vision of building our endowment to the point where it can begin to replace lost public sector funds and sustain the vital groups working to build the thriving communities we all want to see across Devon, Plymouth and Torbay. What that means is that we have ambitious plans. We aspire to raise a further £10,000,000 from donors in the next four years. When we succeed we will be able to reliably give £1,000,000 a year, every year thereafter, to local projects reducing our communities' reliance on government support for ever.

Please do not underestimate the value of a small grant – they are hard to come by and often transformative for those who receive them. A vote of confidence can give an enormous boost to a group, quite apart from the much needed cash. The groups we have funded have told us that they have held out a helping hand to over 55,000 people this year thanks to people like you, and this is our, and their opportunity to tell you how truly grateful we all are for your support.

## Thank you!

**Mike Bull**, Chairman.



**MIKE BULL**  
Chairman  
[info@devoncf.com](mailto:info@devoncf.com)



**MARTHA WILKINSON**  
Chief Executive  
[martha@devoncf.com](mailto:martha@devoncf.com)

# Highlights

**£3.7m**

endowed funds held on behalf of donors

**222** (2012-13)

grants made benefitting local projects and communities, with an average grant size of £1,914

**£36k**

raised as BBC Radio Devon's Charity of the Year

**55,000**

people helped across Devon

**48**

endowed charitable funds held

**£553k**

received in donations given by individuals, companies, charitable trusts and statutory bodies

**£425k**

awarded in grants 12-13

**60**

'Surviving Winter' grants made from as little as £125 to support vulnerable and older people in fuel poverty

**STOP PRESS**

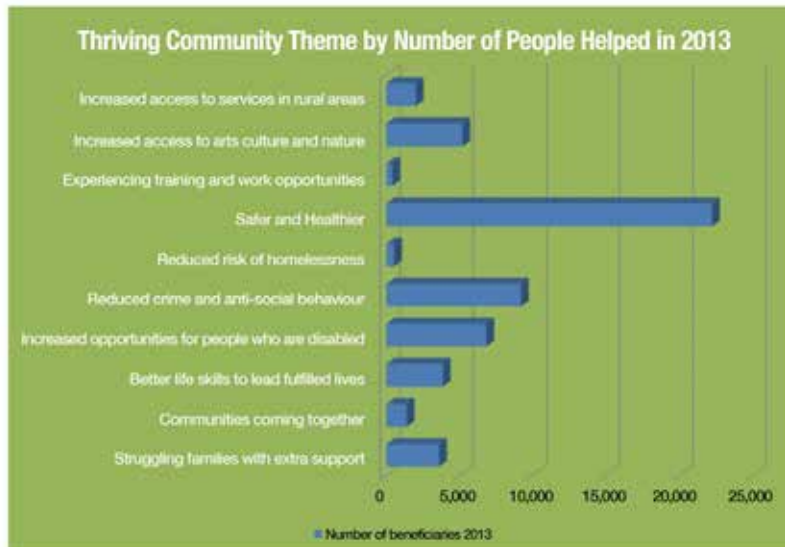
**£150k**

donated in Feb 2014 to Devon Flood and Storm Fund

# A Better Future Together

Philanthropists are people who want to make a difference – with their money and with their energy. Devon Community Foundation brings them together with the many amazing local groups and volunteers who can make that difference happen, locally. This review highlights the impact of the Foundation's work in communities across the county. By matching donors with do-ers we show how grants from the Foundation's Funds can make a big difference and help to build a better future for everyone. Whether it's a small grant to cover the running costs of a community group, or a larger investment to create a new

programme to meet an emerging need, the Foundation's grants are awarded to excellent organisations after robust assessment. Independent panel members, advisors and donors all contribute to evaluating applications, bringing a range of expertise, knowledge and experience to decision making. Last year we introduced you to thriving communities, our vision for the future, where everyone feels supported to solve the problems on their doorsteps to make their neighbourhoods a better place. The accompanying chart shows our ten thriving communities themes, enabling lives to be transformed across Devon.



## Thriving Communities...

-  **10** promote access to arts, culture and nature
  -  **13** offer training and work opportunities
  -  **36** encourage safety and resilience
  -  **35** keep people safe and well
  -  **3** help people to find and keep a home
  -  **13** provide access to services in rural areas
  -  **35** enable disabled people
  -  **13** assist families in need
  -  **8** bring people together
  -  **18** develop life skills
- 184** grants made in 2013

## Grants awarded

Devon Community Foundation supports projects across the whole county



# £9.4 million

awarded in Devon since we began

# Overview of Grant Making

“ The Dulverton Trust is grateful to Devon Community Foundation for successfully managing our minor grants scheme in the South West. The Foundation’s local knowledge has been a great asset, enabling us to reach the many small charities and community groups in Devon that have benefited from Dulverton grants over the last three years. ”

On behalf of our fund holders we made 184 grants totalling over £614,429 in 2013. We manage a range of different funds and the spread of grants made is reflected in the examples shown on the following pages. In 2012-13 our grants helped to support over 55,000 people across the county making an immediate impact on their lives now and leaving a lasting legacy for the future.

It is very important to grow the endowment we have available to fill the ‘gap’ in funding needed by groups and to ensure that they are used to maximum effect where the need is greatest. Grant making is an evolving process and it’s crucial that we keep learning what works best for those needing funds and for those philanthropists we advise. Although there is a process, this is not about process, it’s about heart.

We are working with more Devon based donors than ever before and we now have 48 grant making funds from individuals, families and businesses. We have increased our endowed funds from £180,000 to just under £4,000,000 during the last four years and the income from this now replaces 15% of the shortfall created by the lack of government funding. We also manage

grant programmes in partnership with local and national charities, trusts and foundations – they know that we know the best in the county and trust us to use their funds really well.

## Identifying and tackling issues together

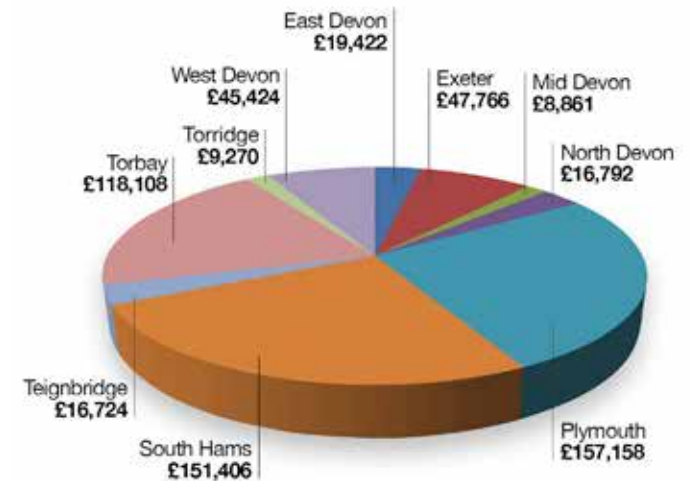
This is what we do. We believe that local communities are best placed to identify the issues in their communities, and this is why we ask grantees to explain and demonstrate the deprivation or disadvantage locally or in their community of interest. We recognise that deprivation creates different challenges when it occurs in inner-city wards, market and seaside towns, or in rural areas. In 2013 we asked everyone for their thoughts. You told us we should:

- support funding requests for set up and core costs, as funding for this is as rare as hen’s teeth and it contributes to building resilience within the sector;
- support both on-going projects, funding ‘what works’ and is proven to have an impact – and new projects or pilots which are considering new approaches to local needs;
- assess on a case by case basis whether we will repeat fund the same project, but prioritise projects that have not been previously funded;

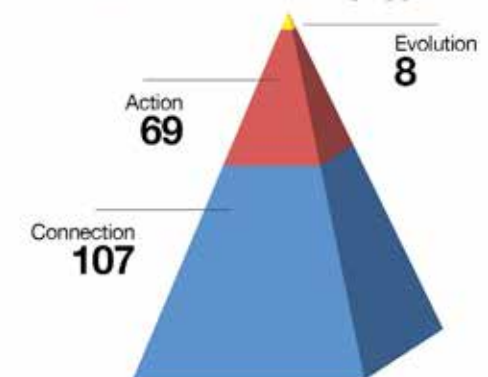
- limit applications to one application per organisation, per grant type, per year;
- encourage applications from the whole of Devon, Plymouth and Torbay to ensure a good geographical spread and target areas which are under-represented;
- introduce (if required) an annual cross-cutting theme to address a new need, e.g. following an emergency/disaster or substantial change in local economic conditions;
- explore ways of streamlining our application process further to ensure it is as easy as possible to access our funds.

All this is reflected in our new grant strategy. We recognise that ‘one size doesn’t fit all’ and have structured our grants programme to reflect this by offering **Connection**, **Action** and **Evolution** grants depending on the size of the organisation and the type of project. With the knowledge and learning gained from the many Connection and Action grants we award, we can identify and support groups who would benefit from our Evolution grants (including grants to ‘scale-up’ projects across the county or regionally). This also enables us to offer opportunities to our donors to engage in either (or both) community and strategic philanthropy depending on their preferences.

Where have the grants been made?



Number of Grants by type 2013



# Connection

Connection Grants are up to £1,000 and are awarded to:

- community projects such as parent and toddler groups, activity clubs, events, support groups and projects helping communities come together
- community groups that are mainly run by volunteers
- community groups with an income less than £30,000 per annum

## Children and Families in Grief

### Drying the tears

Children and Families in Grief (FIG) provide practical, emotional and creative support for children and their families following bereavement. Over the last two years they have seen an almost five-fold increase in families desperately needing their support and James' story is just one of them. Three days after his birthday and just two days before Christmas his Father tragically committed suicide, James stopped talking to his family and friends and was left feeling confused and alone: "It left me feeling sad, like I was the only one in the world that had lost a Dad. FIG made me feel a lot better, talking to someone made me realise I am not the only one."

The group offer a range of support including meetings with highly skilled therapists and participation in therapeutic weekends, sharing experiences with other families completely free of charge. The project helps to break down the barriers surrounding bereavement and supports children and their families to talk about their loss. This has long lasting ramifications and has the power to completely transform negative emotions into positive memories for the families in the future.



"Thank you for helping us, this support has made a fantastic difference and each and every penny goes to help the families in need directly."

Children and Families in Grief (FIG)



# Action

**Action Grants are up to £10,000 and can be for core costs support and are awarded to:**

- groups that are finding new ways to be sustainable
- projects that are more preventative in nature
- projects that respond to crisis
- groups who have previously been awarded a Connection grant and are growing and developing

## Health and Local Food for Families

### A winning recipe

In 2013 one of the largest employers in Devon, Axminster Carpets, was forced to make around half of their workforce redundant. Individuals and families were suddenly in unexpected and difficult circumstances. A survey showed that a reduced income leads to people eating less fruit and vegetables while relying more on junk food. Axminster Foodbank saw a huge increase in demand for food as people began to discover that they didn't have enough to eat. So to help local people stretch their income, they needed to learn about budgeting, planning their food and cooking a healthy low cost meal.

One local man, who had worked for the business for his entire life along with his parents, found his family with no income overnight and no way of knowing when the next pay cheque would be on its way. He got in touch with Health & Local Food for Families. HALFF responded rapidly in Axminster by running 'Cooking on a Budget' courses offered to former Axminster Carpets employees. The courses were designed to be practical and to build people's confidence in cooking, showing that you can eat healthily on a low budget. The charity also encouraged former employees to volunteer at its Food Information Centre, shop and vegetable garden to help maintain and develop their work skills until they were able to find new jobs.



“We were thrilled with the grant awarded from Devon Community Foundation. After Axminster Carpets went into administration, we saw the urgency to help people who would be struggling financially.”

Tiggy Parry, director of Health & Local Food for Families (HALFF)



# Evolution

Evolution Grants could be for more than one year's funding and are awarded to groups and organisations:

- that have been identified through receiving a Connection or Action grant and have potential to develop their project further
- to fund pilot projects
- to fund projects that are scaleable or replicable that have the potential to support more communities in Devon

## Food in the Community

### Waste not want not

Despite Devon's seeming affluence there are areas of deprivation equal to the worst found anywhere in the country. Home Office figures show that over 200 children in and around Totnes live in poverty. Everyday, obscene amounts of fresh fruit and vegetables are wasted across the UK but Food in the Community work with local producers to make sure these foods can be used where they are most needed in the community. The group collect unwanted produce and distribute it to low income and vulnerable groups, charitable organisations and projects in the South Hams and surrounding areas.

They deliver boxes of fresh food to people recovering from cancer, and to others struggling to make ends meet as well as groups such as the Rainbow Nursery who feed up to 50 children. The deliveries mean they can ensure the children receive at least one healthy meal a day. The Nursery said: "We are a charity, so free and quality produce helps us hugely. We work with families that are hungry. We can support them with free bags of fruit and vegetables, which are very deeply appreciated."



"The funding from Devon Community Foundation has helped us to put edible, healthy food to good use in the community."

David Markson, director of Food in the Community

# The Tip of the Iceberg

## Dance in Devon... promotes access to arts, culture and nature £29,960

Research has shown that only 20% of men and 17% of women aged 65-74 get the recommended levels of physical exercise, and for people over 75 this falls to 9% for men and 6% for women. Dance has been proven to enhance general wellbeing, balance, coordination and has even been associated with helping with specific conditions such as Parkinson's Disease. Dance in Devon provides weekly sessions in residential homes across the South Hams helping older people to improve their quality of life and sense of fulfilment.

## Changing Tunes... encourages safety and resilience £1,500

The total cost of sending someone back to prison is £65,000 for just one year including court, police welfare and prison costs. Changing Tunes works in Exeter prison running music classes helping prisoners to build relationships and reduce re-offending through engagement with music. Only 15% of those involved with Changing Tunes re-offend compared to the national average of 61%. A saving of hundreds of thousands of pounds to the tax payer!

## Devon Rape Crisis Service... keeps people safe and well £3,000

25,000 women in Devon will have experienced rape or serious sexual assault – 8% of the adult female population. But only 1 in 8 assaults are ever reported to the Police leaving an estimated 3,000 rapes and sexual assaults unreported in Devon each year. In its first full year of operation Devon Rape Crisis Service took over 400 calls to their helpline, 40 referrals from partner agencies, gave direct support to 40 women across the county and delivered 233 individual support sessions to women in need.

## Pregnancy Crisis Care... assists families in need £30,000

Baby loss is a complex area of grief that can be emotionally crippling and is often misunderstood. The project supports mothers and partners through the bereavement caused through miscarriage, stillbirth, neonatal death and any other form of baby loss. Pregnancy Crisis Care identified a huge gap in support currently provided by local services. A couple who experienced a stillbirth said "It has been of such enormous help to us to be supported through our journey of coming to terms with the loss of our daughter."

## CHAT (Churches Housing Action Team) ... helps people find and keep a home £1,500

Homelessness creates many barriers that can be extremely challenging to overcome: nowhere to wash clothes, store fresh food, get warm in cold weather. CHAT works across Mid Devon with people who are facing homelessness, sleeping rough, or have been released from prison or a young offender's institution. CHAT provides advocacy, bedding, food and tents as well as offering meal vouchers and a hardship fund for one off expenses. "The workers basically saved my life. They got me back on my feet and gave me the will to function again. Their belief, and non-judgemental help, got me through a very bad time in my life. I will always be grateful to them."



...promote access to arts  
culture and nature

...assist families in need

offer training and work  
opportunities

...encourage safety and resilience

...help people find and keep a home

...keep people safe and well



...develop life skills

...provide access to services in rural areas

...bring people together

...enable disabled people

**Exbourne and Jacobstowe Community Association... provides access to services in rural areas**

**£1,000**

Exbourne and Jacobstowe Community Association is a community enterprise working in a very deprived rural area; the nearest towns are 6 miles away and with irregular transport links, access to services is nearly impossible for the local community. Extremely lacking in infrastructure facilities, for 12 years Exbourne had no permanent shop or Post Office. To tackle these issues the local residents decided to create a community hub, this project really brings the whole community together.

**South Devon Multiple Sclerosis Society... enables disabled people**

**£2,000**

Multiple Sclerosis is complex, and has many symptoms which might include fatigue, vision problems and difficulties with walking. It is different for everyone and living with MS on a daily basis creates challenges, whether you've just been diagnosed or have lived with the condition for some time. The South Devon Multiple Sclerosis Society provides physio classes helping to support people suffering from MS to improve their mobility. Demand for the classes is extremely high and so a grant helped them to expand their services to support more people living with the effects of MS.

**About Time... brings people together**

**£4,986**

Timebanks help to reduce isolation and deprivation to achieve a stronger community with more active citizens working together to tackle their problems. About Time based in Plymouth has proven to be a great help to older people locally who, although independent in general, may need some assistance. The group also makes a

significant difference to Asylum seekers, who are not permitted to gain employment, by offering them something to do which makes a real contribution to their new home and tackles isolation. All members of About Time have been refused the opportunity to volunteer in other projects, but at the Timebank everybody has valuable skills to offer.

**St Sidwell's Centre... develops life skills**

**£8,053**

The centre, based in Exeter, covers an extremely deprived area ranked in the top 5% nationally and supports people needing work experience, vocational and life skills training and the opportunity to be part of a community. St Sidwells works with over 40 volunteers facing social exclusion, and engages people in a range of activities at the centre. It provides courses for those not currently in education or training. These develop self-confidence and give opportunities to take part in creative writing, arts and craft workshops as well as practical skills such as cooking and DIY.

**Whiz Kidz... offers training and work opportunities**

**£1,500**

Whiz Kidz is a business club which works with 13-19 year olds in Plymouth, helping to raise aspirations, skills and expectations, enabling young people to achieve the qualifications they need to help secure future employment. The group particularly targets unemployed young people from areas of deprivation and disadvantaged backgrounds (many from families with many generations of unemployment). The club helps increase self-esteem and confidence by offering insights into different types of careers as well as providing a variety of practical business skills and a greater understanding of the working world.



# Our Thriving Community

## Building vibrant and caring communities for everyone



“Prisoners and ex-prisoners from HMP Exeter and their families are extremely grateful for your support. It has made, and continues to make, a real and lasting difference to people’s lives.”

Changing Tunes



“Thanks to Devon Community Foundation we are able to continue preventing homelessness across Mid Devon by giving housing advice, tenancy support and food and fuel poverty relief.”

CHAT

“In a rural area where opportunities can be lacking, this grant has enabled us to help local people reach their full potential.”

Exbourne and Jacobstowe  
Community Association



“As we continue to be inundated with requests for support this funding is essential; it makes it possible for us to help people to help themselves.”

About Time



“The funding enabled us to hold holiday clubs & workshops for young people to learn about career types and setting up their own businesses.”

Whiz Kidz



# Figures

## Summary of Last Audited Accounts 12-13

|   |            |
|---|------------|
| Total Grant Making                            | £425,048   |
| Total Income                                  | £1,149,468 |
| Endowment at 31st March 2013                  | £3,738,468 |
| Grants Awarded 2012-13                        | 222        |
| Income Grants Programmes                      | £354,106   |
| Income Other                                  | £795,362   |
| Cost of generating voluntary income           | £111,182   |
| Administration of grant making and governance | £54,218    |

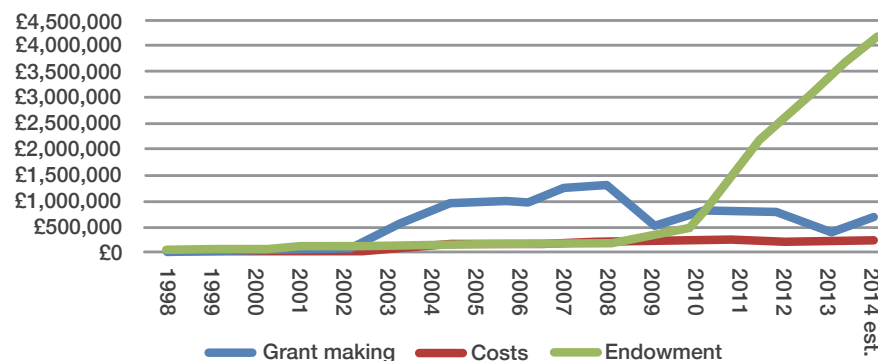
If you would like to request a full set of accounts, please call us on **01884 235887** or email [info@devoncf.com](mailto:info@devoncf.com) or visit [www.devoncf.com](http://www.devoncf.com)

## Investment - a safe pair of hands

This year Devon Community Foundation linked with Wiltshire and Swindon Community Foundation and Somerset Community Foundation to work together on appointing investment managers and negotiating a collective agreement, a first in the country for Community Foundations. The result of this collaboration has been the appointment of two investment managers: Smith and Williamson Investment Managers and Ruffer LLP. Reinvesting with our new managers has brought about significantly reduced fees and a much improved return on investment. In addition, Community First Funds which have attracted the 50% matched funds are managed by CCLA Investment Management Limited.

Predictably, grant making fell in 2009 following the end of Government grant programmes and the subsequent poor performance of the stock market. Naturally there is a lag between donated funds being invested and those investment returns being realised for grant making. The period between 2009 and 2013 is indicative of this. The chart below shows how we are persisting in keeping our costs as low as possible and that grant making is starting to increase from the endowed funds.

**Costs, grant making and endowment 1998-2013**



# Our Funds

## A single application opens all these doors

### **Activistock Fund**

to support community groups and organisations in Tavistock and surrounding villages which tackle deprivation and make a positive difference to the lives of local disadvantaged people.

### **Arnold Family Fund**

for the relief of rural deprivation and isolated communities.

### **Blundell's School Fund**

to support young people within deprived or disadvantaged communities by funding projects run by voluntary and community organisations.

### **Clare Milne Trust**

to support disability projects which provide services or support to disabled adults or children.

### **Comic Relief**

to empower local people, enabling them to create lasting change in their communities. Priority is given to small, locally based groups or organisations in areas of disadvantage that have a clear understanding of the needs of their community.

### **Crimebeat**

to support local groups in Devon that benefit community residents by promoting crime prevention and/or Community safety.

### **DCF Community Grants**

Connection, Action or Evolution grants to support projects across Devon tackling deprivation or disadvantage locally or in their community of interest.

### **Devonian Trust Fund**

to help community groups specifically targeted at relieving mobility problems, such as Stroke Clubs and Disabled Fellowships. The fund is also available to individuals who are affected by mobility issues.

### **Devon Ripple Fund**

to support organisations which work with young people around boundaries and their core confidence. Methods of working might include: mentoring, peer support, outward bound activities, new opportunities and raising aspirations.

### **Dulverton Trust Fund**

to support groups which help people help themselves and work which moves people on, fostering independence, confidence and direction for people.

### **Earth to Earth**

sustainable ideas that shape the local community for future generations: eco-friendly, growing and sharing of local produce, befriending, intergenerational, shared access to community space and resources.

### **Foot Anstey**

to support voluntary and community groups assisting families in need.

### **Greg Matthews Fund**

in memory of Greg to enable children from deprived or disadvantaged backgrounds to attend dance classes.

### **Hely Hutchinson Family Fund**

to support projects that bring together communities that experience deprivation and disadvantage. This may include projects that are gardening based, have a connection with the use of land or provide wellbeing and meaningful occupation for adults.

### **Kitsons Solicitors Fund**

to support small community groups, organisations and charities across Devon which benefit disadvantaged people and communities, specifically those close to Kitsons LLP offices.

### **Laurie Connor Fund**

to support the following types of groups in the South Devon area: sailing and water sports related projects, rural pursuits which give opportunities to learn new skills and experiences, gardening related projects and those involving young people.



### **Mildmay-White Family Fund**

to support small local groups with a particular interest in young carers and young people whose lives are affected by drug misuse.

### **Millfields Trust Plymouth Drake Foundation Fund**

to support activities that promote the learning and personal development of children and young people in ways that enhance their employment opportunities and life chances in the Stonehouse area in Plymouth.

### **Mumme Ackford Fund**

to support groups across the whole of Devon which are actively working to bring about positive social change for the most disadvantaged people in the community. This fund has a particular interest in young people and in work that enables people to fulfil their full potential.

### **North Devon Relief Fund**

to support mainly small, volunteer-led community and voluntary groups working in their local community to tackle disadvantage and deprivation in North Devon, with priority given to projects in Lynton.

### **Philip Milton & Co plc Fund**

to support disadvantaged people and communities in North Devon and Torridge.

### **Plymouth Drake Foundation Community Grants**

to support community groups and organisations in Plymouth and its travel to work area, enabling them to address disadvantage as identified in their local community.

### **Queen's Trust**

enabling groups working with young people to scale up their activities. (See page 16 for more details).

### **Ray Miles Fund**

to support innovative social enterprises.

### **Rural Devon Fund**

to help and support small, local voluntary and community groups in rural Devon.

### **Royal British Legion Plymouth Drake Foundation Fund**

to help community groups in the Plymouth City area that address the local community needs and to help and support beneficiaries of The Royal British Legion (anyone over aged 16 who is or has served in the UK Armed Forces) including their families and dependants.

### **Royal Mail Plymouth Drake Foundation Fund**

to support small community groups and organisations in Plymouth enabling them to meet relevant needs as identified in their local community.

### **South West Water Plymouth Drake Foundation Fund**

to support youth related projects in the Plymouth area including water related sports and those with environmental themes.

### **Throwleigh Fund**

to support community groups which work with young people, especially around the theme of accessing Dartmoor.

### **Trinity House Plymouth Drake Foundation Fund**

to support local organisations which work with disadvantaged residents of Plymouth or its travel to work area to access marine activities, maritime education, and to learn about the sea and safety of marine based activities.

### **University of Plymouth Drake Foundation Fund**

to support young people in the Plymouth area to undertake new and innovative activities as well as personal and development opportunities.

# Philanthropy

## The Business of Philanthropy

Devon Community Foundation is a trusted philanthropy adviser offering each of our Fund holders and clients a bespoke service. We advise on where their priorities for local charitable giving can make the best impact, investing their donations to maximise return and delivering precision grant making on their behalf.

We research and advise on needs and issues, conduct due diligence, report on impact and outcomes, and engage them in their philanthropy. Better still it's much, much easier than having a charitable trust with all the same benefits.

Helping businesses focus their Corporate Social Responsibility really allows them to demonstrate they care about their employees, their customers and their local community.

This year we are proud to have four of our donors become Philanthropy Fellows, working together with other givers across the South West to explore issues and share experience and knowledge.



## Community First – making the most of your giving



In 2012-13 donors added nearly £500k to our endowment with the help of the Community First Challenge, a government backed initiative to encourage endowment building. Anyone putting money into our endowed fund will attract an extra 50% to their donation, and you can even have a fund in your name once it reaches £25k. This challenge runs until December 2014 and allows us to access several millions of government funding so you'd better be quick! The income from the endowed donations will be available to respond to the needs of our local communities now and in the future. As our example shows you can more than double your donation with Community First and when gift aid and tax relief are applied.

How could you help us to reach our £10m endowment target? Like this...



\*For 45% taxpayers the tax relief is 25% of the gross payment.  
\*\*You can of course choose to donate your tax relief as well.

# What we do for our donors

If you have ever considered giving locally and perhaps starting a charitable foundation, or if you already have one, there is a better way

## Our Core Services...

- Philanthropy advice to develop a bespoke giving strategy, including needs research and theory of change
- Hold and administer tailor-made charitable funds for donors
- Grant programme management, due diligence, monitoring, evaluation and review
- Tax-effective giving
- We can accept legacies, shares, assets and cash

## A range of benefits...

- Bespoke management and decision making
- Project visits and meetings
- Impact reports and fund investment statements – peace of mind
- Fund holder events and invitations to philanthropy events

## A choice of fund types...

Depending on what you want to achieve with your giving, you can give now and/or invest funds to help future generations.

Many donors like to involve their families in their giving, and building a legacy with DCF enables them to keep giving throughout their lives.

Often donors create 'in memory' funds to celebrate their loved ones after they are gone or enjoy leaving a legacy in their own wills to keep on giving to issues they care about. These can be both for immediate or endowed giving.

Funds are based upon the 10 thriving community themes and can be changed yearly depending on our donors' wishes and can also be restricted according to geographic area.

## Several ways to make a difference...

- Establish your own fund to give to a cause you care about
- Pool your giving with others when you donate to the Foundation's Thriving Communities themes
- Support the Foundation directly and maximise the impact we can make locally

Our team works with each fund holder to develop a portfolio of giving in line with their wishes to maximise the impact of their philanthropy.

Contact Martha Wilkinson on **01884 235887** to discuss how your donations can make a difference or visit our website [www.devoncf.com](http://www.devoncf.com)

"DCF's track record of developing partnerships with the local press, and making grants within that setting, made them well placed to be able to deliver the investment with BIG Lottery Fund."

"Seeing first-hand the impact that such an inspirational project can have was utterly astonishing. I didn't know giving could be so enjoyable."

"What a brilliant way to give, some great charities to support, my only problem was I wanted to give to all of them."

"Our fund is a great way for us to leave a lasting legacy to the local community in which we live and also to see and enjoy the results of our giving in action every year."

"It's a great way for us to help tackle local issues and get our giving to areas where it's really needed."



# UK Community Foundations

Quality accredited by  
UK Community Foundations  
to standards endorsed by  
the Charity Commission



Devon Community Foundation is a member of UK Community Foundations, a network of 46 accredited Community Foundations covering 93% of UK. UK Community Foundations collectively have raised £338 million for local communities, an increase of 13% in the last year. Community Foundations are a catalyst for change, funding projects which make a big difference to the lives of vulnerable local people. Last year over 14,000 donors gave through their local Community Foundation to 20,577 organisations with grants exceeding £62 million.

## Shine a Light

The recently published Shine a Light report highlighted that half of adults in the South West give to local causes but want to do more. When it comes to what people gain by being part of a community, over three quarters say it provides friendship, while just under half said it gives them the support they need and a sense of belonging.

Shine A Light shows that our local communities are vital to our collective sense of wellbeing. It brings to life what we at Devon Community Foundation see first hand, every day. When we connect people's support for their community with a way of giving, that gets money efficiently to those in need locally, then we can deliver real transformation. This is why we're calling for people to get involved with Devon Community Foundation and help us reach our target of raising an additional £10 million of new funding for local communities by 2017.

## Accelerator Grants



UKCF is working with the Queen's Trust to make a series of strategic grants in just three areas of the county of which Devon is one. The aim of these grants is to enable some of the very best examples of projects and organisations that assist young people to replicate their working model. Devon Community Foundation has supported:

- Stonehouse Playspace Association provide Outreach Play and Youth services through their Play Ranger Community Play Project and Youth Activity Team work in central Plymouth and are keen to develop their work in a rural area to share expertise. They have recently reopened the sadly underused Princetown Pavilion.
- Exeter YMCA Community Projects have been supporting the most vulnerable people in our community providing in depth employment support to disadvantaged and unemployed young people and adults alike. Through using trained volunteers

the young people attending Job Clubs will be equipped with the soft, social skills needed to be more self-sufficient and survive in the world of work, such as the use of body language, how to hold a phone conversation and how to handle constructive feedback. This grant enables them to spread the model far and wide across Devon.

- Work Skills South West CIC (WSSW) was established to work with the individuals that have fallen outside the traditional forms of education and training, engaging with the hardest to reach young people, long term unemployed, adults with learning difficulties and disabilities and individuals who have mental ill health. This project equips young people with the necessary knowledge to act as peer mentors. As well as the first line in identifying those at risk or working with those who are already involved in criminal activity within their communities. This grant enables WSSW to roll out their method of working across the region with schools, colleges and other community organisations.

# Volunteer of the Year Awards

## Winners 2013



The High Sheriff of the Devon's Award  
*sponsored by John Lee, High Sheriff*

**Winner:** Brian Warren and Joanne Jones  
from Farming Community Network



Bringing People Together Award  
*sponsored by HSBC*

**Winner:** Stephen Woodward  
from Scoot-A-Long



Rural Volunteer of the Year Award  
*sponsored by Mole Valley Farmers*

**Winner:** Laura Hughes  
from Moorvision



Trustee of the Year Award  
*sponsored by Devon Voluntary Action*

**Winner:** Alison Wood,  
Margaret Cushen, Janet Regan  
Trustees of Vocal Advocacy



Children & Young People Award  
*sponsored by Kitsons Solicitors*

**Winner:** Peter Ogburn from HMS Heroes  
(collected by Laurie Foxcroft)



Safe & Well Volunteer of the Year Award  
*sponsored by Mildmay- White Family Fund*

**Winner:** Hannah Fortune  
from Devon Rape Crisis Service



Devon Community Foundation's  
Thriving Communities Award

**Winner:** Crossroads Care Torbay







Devon Community Foundation, The Factory, Leat Street, Tiverton EX16 5LL  
Call: 01884 235887 Visit: [www.devoncf.com](http://www.devoncf.com)

A company limited by guarantee, registered in England and Wales, Company No: 3236918  
Charity no: 1057923



 DevonCommunityFoundation  
 @devoncf